

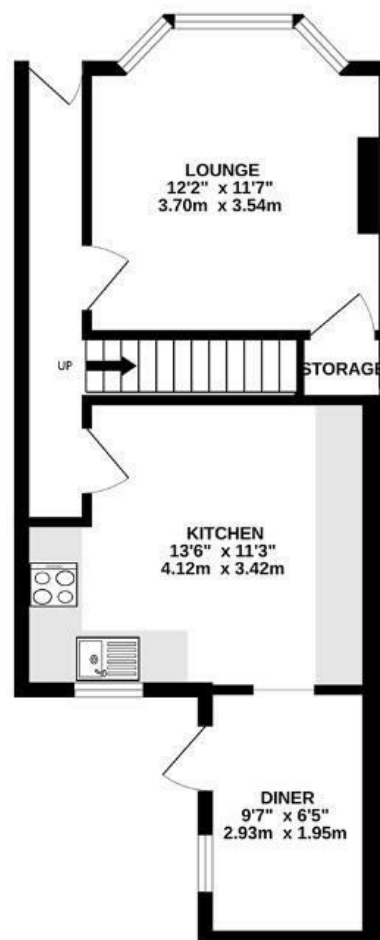
# Hillside Street

## TOTTERDOWN

APPROXIMATE FLOOR AREA  
74.4 SQM / 801 SQFT



GROUND FLOOR



FIRST FLOOR



Boardwalk

# Hillside Street , BRISTOL



£350,000



BS4 3AU



2 Bedrooms



1 Bathrooms

*"I've loved how peaceful it is here, with hardly any foot traffic and a sunny, south-facing garden perfect for sunsets. Great local spots like Fox & West, Banana Boat, and the Bakehouse are just around the corner, with pubs and restaurants up the hill. Parks, shops, and buses are all close by – it's a real community feel, yet still walkable to the city."*

